

## JUNG HYGHSPIN HOPPER SERIES PUMP

Hygienic twin screw pump

JPS HYGHSPIN 70H

- Flow 100l/h to 30m³/h
- Pressure up to 25 bar
- Viscosity up to 50,000,000 cSt
- Temperature -10°C to +130°C (160°C)
- Max. particle size 45mm



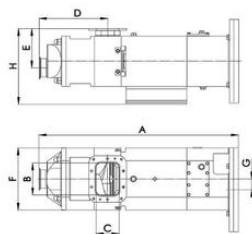
### PRODUCT DESCRIPTION

The HYGHSPIN Hopper is an addition to the worldwide tried and tested HYGHSPIN series of Twin Screw Pumps made of stainless steel. The innovative twin screw pump with a funnel opening is capable of transporting products with viscosities of up to 1000 Pas. Its conveyor screws are extended so that they can induct non-flow capable products below the inlet funnel in a similar principle to an extruder and then feed them into the pump chamber. This ensures a particularly gentle handling - an external extruder can be completely dispensed with.

The HYGHSPIN Hopper therefore provides a very attractive 3-in-1 solution: Feeding, conveying and cleaning take place in only one component. It is available in block design or with free shaft end.

### TECHNICAL DATA

|                                    |  |
|------------------------------------|--|
| Connection type                    | Different sizes and connector standards by arrangement   |
| Differential pressure              | 20 bar   |
| Flow max                           | 10 m³/h  |
| Material of elastomers             | EPDM, FPM, HNBR (Nitrile rubber), FFPM   |
| Material of wetted parts           | Stainless steel 316/316L (1.4401/1.4404), Stainless steel 1.4462, 1.4404, Stainless Steel 1.4539 |
| Maximum diameter of solid material | 20 mm  |
| Pump orientation                   | Horizontal, vertical or lateral  |
| Temperature operational max        | 180 °C   |
| Temperature operational min        | -10 °C   |
| Viscosity                          | 0.5 - 1,000,000 mPas   |



| Pumpstörck | A      | B     | C     | D     | E     | F     | G      | H     | Inlegg (Steel)       | vikt  |
|------------|--------|-------|-------|-------|-------|-------|--------|-------|----------------------|-------|
| 70 Hopper  | 611mm  | 98mm  | 63mm  | 211mm | 175mm | 199mm | 35mm   | 272mm | DN65 DN100 (2.5"-4") | 70kg  |
| 90 Hopper  | 814mm  | 134mm | 93mm  | 278mm | 164mm | 259mm | 45mm   | 317mm | DN80 DN150 (3"-6")   | 135kg |
| 125 Hopper | 1065mm | 152mm | 122mm | 334mm | 203mm | 349mm | 62.5mm | 419mm | DN100 DN200 (4"-8")  | 305kg |